

THE VIRTUAL WALK ALONG ST ANNS WELL ROAD PRE 1970

(this version created and revised 9th April 2014)

“To honour what was”

St. Ann's Well Road Pre. Demolition (1970) Online Community. (facebook)

Site Admins:

Tony Miller and Mavis Baker (editor)

Notes:

A Kelly's Street Directory of the mid 1950's was used for the street numbers and details of occupants

Thanks to Picture the Past who gave our site permission to use their images freely
<http://www.picturethepast.org.uk/>

Any correspondence regarding this document should be sent via email to: Mavis Baker
<mailto:pierrepoint@inet.net.au>



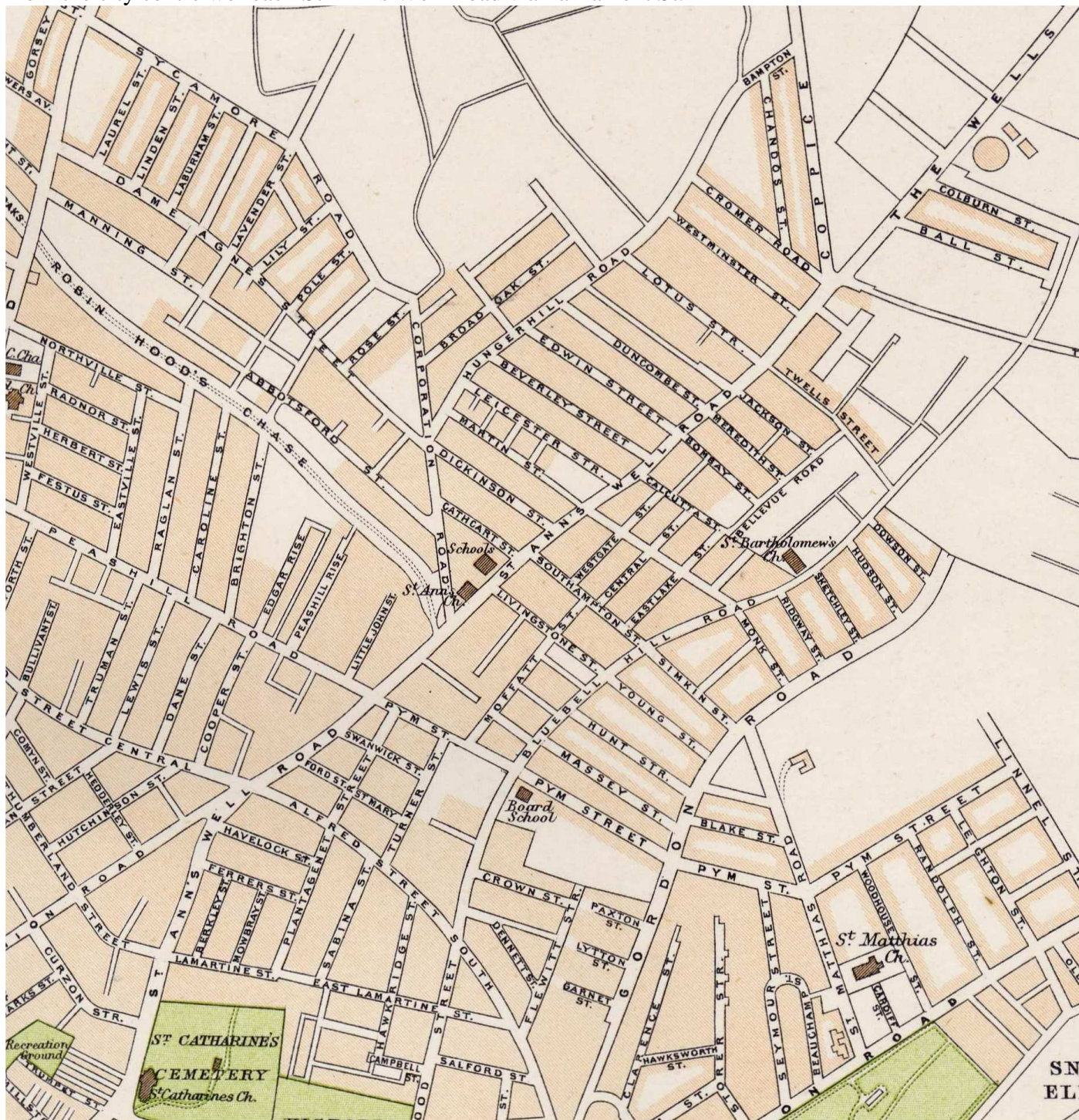
Aerial view looking down King Edward St

St Ann's Well Rd continues on from King Edward St.



The No 40 trolley bus is just approaching the roundabout. Palais de Danse to the right and the Central Markets to the left

From the city centre we reach St Ann's Well Road via Parliament St.



Reaching the corner of King Edward Street one finds:

CENTRAL MARKET and- THE PALAIS DE DANSE



This was one of the fabulous ballrooms we had in Nottingham and it was on OUR doorstep!

If we get tired of walking, we can always catch a trolley bus (no 40 or 47). There was a bus stop just around the corner, (note the overhead wires). Many a delay was caused by the trolley connections coming adrift rounding the corner from King Edward Street onto Parliament St; and the conductor would have to get off and use the long pole to reattach the trolley.



THE CENTRAL MARKETS



As we go a little further we pass the bottom end of the Market - and here is where we would have got a dish of lovely **HOT MUSHY PEAS**.



Tony Miller --Great idea Mavis, may I join in your special walk.....Sorry but I can't pass the Central Market without having a pot of Mushy Peas...Salt & Pepper, touch of Mint and a sprinkle of vinegar, so it's on the corner and up the steps through the doors and there's the counter on the left, lovely M'Duck.



Tony Miller --Whilst i am in the market I must take a gander at the pet shop....love the white mice, could have some fun with one of them...but what I really fancy is a grass snake.....to scare the girls....Hissssss

Note: to view 19 photos of the Central Market on our site - click this link:
<http://www.facebook.com/media/set/?set=oa.200737526693210&type=1>

HUNTINGDON STREET BUS STATION is next on our left



Sid Wheeldon --Huntingdon Street Bus Station holds particular memories for me, I and lots of others caught the buses on certain Sunday nights to get back to Warminster Army Camp in time for parade Mon morn along with a few female "Camp followers" lol

Kay Burford --Like Sid, The Huntingdon Street Bus Station brings back memories, standing in line waiting for the Skeggy bus to come in, to be taken to my second home beside the seaside.

WILLIAM BOOTH MEMORIAL HALLS (Salvation Army)



Sid Wheeldon: "William Booth Hall across from the Locarno(VIC) & Bus station Lots of Parades by Boys Brigade, Cubs, Scouts, & Girl Guides, & Salvation Army started from this Location on Sundays etc Brilliant, not forgetting Sea Scouts as well"

Across from the Salvation Army William Booth Hall (other side of this roundabout) we see The Generating Station, Victoria Ballroom and The Empress Cinema

The Generating Station/Tram Depot



Sid Wheeldon makes the comment: *"If I had the Money I would Buy this Building (Generating Station) and turn it into a St Ann's Museum. housing any artefacts/photo's/memorabilia/ & a life size replica of the down stairs front room, kitchen & scullery of my birth place - 22 Cathcart St. Also show short Films of our childhood & portray what life was like living in St Ann's back in the Day .."*

Now we are on St Ann's 'Well Road.

VICTORIA BALLROOM



"Billy Merrin and his band"



The Victoria Ballroom was opened in 1929. It later became the Locarno and then a Bingo Hall.

(TOUR GUIDE PAUSES AT THIS POINT TO FIND A SUITABLE SNAPSHOT....)

Do we stop and go to the movies or shall we go dancing?

Here is THE EMPRESS.....(1928-1988) to the right of the Victoria Ballroom



If we go inside to the movies we can wallow in ART DECO OPULENCE

Mavis Baker: *"I remember sitting in the Empress in sublime anticipation...watching those curtains change colour with the seductive lighting on them.... the music (perhaps Cherry Pink and Apple Blossom Wine.....) ...waiting to be transported into the world of the movies.... South Pacific... "I'll Climb a Stairway to Paradise".... "Seven Brides for Seven Brothers" How I loved the musicals especially. One time we saw the Third Man.... (mum took to see everything except the X rated horror films)."*

Tony Miller : *"Can you remember the chap in uniform that was in the foyer, and used to let you in if you had been queuing outside....he used to check your age if you wanted to try and get in for an A film...we used to call him Mr. Rhubarb, because he was really tall with a moustache and his uniform was in the traditional red, green, & gold."*

Sid Wheeldon: *"what a great Memory for Detail you have Tony the chap I recall was Mr Spencer doing that Job He was David, Kenny, & Johnny Spencers Dad. The same Man who chased Cappendale Around the Science Lab for really Marking David with the Infamous Strap he Wielded to heavy-handed was Cappel with*

that strap.nowdays a Teacher gets suspended for looking at pupils incorrectly Cappa would have been Jailed forthwith had he been Teaching now lol"

- **TOUR LEADER BRINGS THE TOUR TO ORDER...** "We are standing outside the Empress cinema...if you look over to the corner of Bath Street you will see the St Mary's Garden of Rest, formerly the Victoria Gardens. This was once a cemetery (necessitated by the plague some xxx number of years ago (tour guide unsure of the date at the moment!)...Here you will find the only remaining grave in the park... that of Bendigo the boxer. It is worth your while to take out your ipod or laptop at this moment and Google or Wikipedia his name...makes fascinating reading." I'm popping into the cinema myself to check out the posters of forthcoming films... perhaps I can find one of Clark Gable...now that poster will become a collectable no doubt... "Gone with the Wind"...mint condition.

ST CATHERINES CHURCH

<http://southwellchurches.nottingham.ac.uk/nottingham-st-catharine/hhistory.php> - good photos on this site...also the map has very high definition



Early map of when there was a cemetery here.



circa 1986

Tour Guide comments:

"Pre-empting Sid collecting his best suit for the 100th member celebration we try to get a glimpse of the pawn shop's gleaming spheres in the distance (but not succeeding yet...we are too far away...)"

Sid Wheeldon

"Andersons Pawnshop with the 3 Cylindricals or Spheres Hanging outside lol"

Mavis Baker: " Sid...can you recall where on the road that was?"

Tony Miller *"Mavis, Past Northumberland St, and Just past **Bamford's** on the left walking up Senty, just before Union Rd junction on the left with the "**Coachmakers Arms**" on the corner of **Union Rd**.....have you just found a ticket then Sid....Make sure you get your best suit out and your Granddads Gold Fob Watch, ready for our 100th member, site, celebrations.....I will buy you a pint of Shipo's..."*

Forthcoming on the itinerary:

In 1956 just beyond the Empress (towards Curzon St) on the left was:

No 23 OPTICIAN

No 25 PERAMBULATOR DEALER

No 27 ST ANN'S CAFE AND SNACK BAR

No 29 CONFECTIONER

and on the right: **ST CATHERINE'S CHURCH, PARISH ROOM AND INSTITUTE (tour guide whips out a laptop and tries to find a suitable image)**

No 2 CYCLE DEALERS Smith Bros

No 4a SIGN WRITER

No 4a SHOPFITTERS

No 4½ SHOEING SMITH

No 6 NEWSAGENT

No 8 -10 MOTOR CAR FCTRS Stanley Motor Spares Ltd

No 12 HERBALIST

No 14 SHOPKEEPER Mr Hickling

Fynn Harding; "This was my Dads shop. His name was R.N.Harding. He originally sold cameras and called the shop Ronak after his name Ron and mixed it with Kodak. He had to rename it though after getting a legal letter off Kodak about copyright. He later changed it to a book shop, but not the normal type of books, think he used to call them "Mucky books" which were the reason he spent a little bit of time at one of Her Majesty's secure hotels after the police raided us and found a quantity of the afore mentioned "Mucky Books"."

No 16 WARDROBE DEALER

Tour Guide strikes out up the road.....

"Just make sure this cultural walk does not turn into a pub crawl...I know you senty's lot!!!" she says with tongue in cheek.

We cross **CURZON STREET**

Consulting Kelly's directory of 1956 we may see:

31 & 33 Sheppard W & Sons Ltd BOOT DEALERS

(TONY M stops to ogle the expensive shoes!)

35 & 37 Prossers TAILERS

39 Goodliffe Wltr. Arnold LADIES HAIRDRESSER

41 & 43 O'Dea Patrick DENTIST

45 Lawrence Wm Ernest DENTIST

47 Pocklington Miss Lavinia DRESSMAKER

49 Smith II

51 Judd Cyril

53 Warman, Herbt. Jn. & Son FLORIST

"On the left we will be crossing

Copestakes Yard,

Lamartine St and

Ferriers St,

At No 55 we can have a drink at **THE NAPOLEON HOTEL....** which is on the corner of **Northumberland St.**

Those of us walking up the right hand side of the road will pass **THE GLADSTONE LIBERAL CLUB** between **Copestakes Yard and Lamartine St** (a watering hole for some)...

We can get some cash at the **BARCLAYS BANK** at No 60 (which is on the corner of Ferriers St)

TOUR GUIDE PRODUCES SOME **MAPS** OF THE AREA TRAVERSED SO FAR (dating from when the Victoria Station was first built - late 1900s) (see photos uploaded)

.. looking up the road we see **THE CONGREGATIONAL CHAPEL.**



This photo shows:



No 78 F. W. Farnsworth, pork butcher;

80 & 82 Leslie Atkin Wine and spirit merchant;

84, S.S. Plunkett outfitter 

86 M. H. Coupe Ltd, house furnishers;

Alfred Street South;

88a St Ann's Studios Photographers;

Congregational Chapel and Schools. (ref 1953 Kelly's Directory) - SEE PHOTOS ABOVE

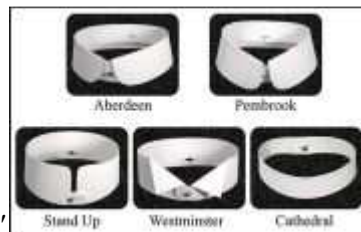
Tony Miller:

*"Can I stop at **Sid Plunkets** to get some white paper collars size 15" going down the Locarno ? Friday night and must have a clean collar, might even get the scissors out and round off the collar ends, to make it look a bit more MOD....."*

I think that Syd Plunkett's shop deserves a "Blue Plaque" for his service to the 60s Gents fashion industry...he was born 40 years too early, otherwise he could have been another Nottingham Paul Smith. Good old Syd...his daughter lives in our Village, Margaret.....she could cut the grand opening ribbon at the ceremony, when we fix the plaque..."

Mavis: *"what a 'fab' idea'.*

Mavis Baker waves an example of a Simplicity pattern she could knock up on her mam's Singer treadle sewing machine by the weekend, and shows her latest purchase from Deans:



"Which collar did you choose Tony?"

Tour guide remarks on the type of suit she has noticed the young men wearing in the 1960s



1960's men's Italian suit - rich navy and black wool weave –jacket fully lined in a rich navy satin-

3 button front high stance - 3 on the cuff - center vent back, skinny 2.5" notched lapels 5 button vest lined in off white - silky feel navy satin back - back adjustable, pleated front pants - unlined - tapered cuffed leg - 1.5" wide waistband with belt loops for a 1" wide belt, label: Burton Tailored, By appointment of Her Majesty Queen Elizabeth II,

Tour Guide produces a link for the 1960's fashion conscious amongst us:

<http://sixtiesbritain.co.uk/60s-fashion-index/>

We are now making our way directly to **THE CAVENDISH** cinema.

We will be passing on our left:



NORTHUMBERLAND ST

The NAPOLEAN PUBLIC HOUSE

BUTCHERS Osborne Bert & Son,

CONFECTIONERS Stubbs Jn

GREENGROCER Dennis Bickley

DYER & CLEANER Wilford King

FUNERAL DIRECTORS W Bamford & Sons Ltd

BEER RETAILER B Read B

LADY BAY CLEANERS LTD DYERS & CLEANERS (proprietor's name Jesse)

STOKES PLACE



Stokes Place (on the left of this photo looking up a flooded St Ann's Well Rd) in 1926

On the right of the picture is Barclays Bank, next to Ferrers Street and the Admiral Dundas public house. On the left is Stokes Place and Everetts Stores Ltd, looking towards the junction with Union Road..

LADIES OUTFITTERS Everetts Stores Ltd

CHEMIST Shaw Frank L

HARDWARE MERCHANT Stones Premier Stores

CAKE FLOUR MFRS Greenman Pure Foods Ltd



PAWNBROKER Anderson Jsph

WELDER Shelton Colin

JEWELLERS Nash Bros

Henleys Tyre & Rubber Co Ltd

CAFE Waddingham Harry

COACHMAKER'S ARMS PUBLIC HOUSE .



UNION ROAD

MILLINER Briley Mrs M E

HARD CONFECTIONERS Thompson Misses Eliz, & Miss Emma

GENT'S OUTFITTERS

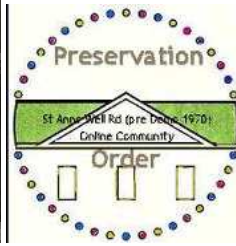
Plunketts S. S. outfitter



BUTCHER Carnill J P

Smith & Walton Ltd PAINT MANUFACTURERS

WESTMINSTER BANK, Commercial Square



The Westminster Bank was a beautiful building designed by Watson Fothergill. (front view above)



Side view of the Westminster bank (above)

The Oliver Cromwell public house opposite the Westminster Bank in Commercial Sq, bottom of Alfred St Central. The photo below shows the view taken from the bank looking to the side of The Oliver Cromwell. A cycle shop is just across the laneway. There is a factory beyond..... several members have a discussion about this spot (update to be made here on the name of this side street and factory beyond)



OLIVER CROMWELL INN PUBLIC HOUSE



Street on the right is Alfred St South

ALFRED STREET CENTRAL

Nottingham Co-operative Society Ltd

Jordans Nottingham Ltd WIRELESS DEALERS

CONFECTIONER

LADIES OUTFITTER Dean L. C.

NEWSAGENTS Joyce Ernest & Co Ltd

CAVENDISH CINEMA

Tour Guide stops for a moment to refer everyone to the document in our files titled: "CINEMAS - The Cavendish (also referred to as 'the cavo' "

(In our Files section you can read ongoing comments about our memories of the Cavendish cinema)



Not far from the cinema is the CONFECTIONER Reason Wm E

Here you can buy your favourite sweets to take into the cinema if you like!

TOUR GUIDE CONTINUES "of course these businesses are those in the 1952 Kelly directory...you may well remember other businesses that were here.....

Those of us who walked up to the Cavo on the other side of the road would have passed:

COPESTAKES YARD

Gladstone Liberal Club and Lecture Hall

LAMARTINE STREET

SADDLER Afred Smith

PHYSICIAN & SURGEON O'Callaghan

PHYSICIAN & SURGEON O'Mahoney Jeremiah

Barclays Bank Ltd



This is a photo of the Midland Counties District Bank - photo circ 1900. Datestone on the building was 1899. It used to be located at the corner of Ferriers St and St Ann's Well Road.

FERRERS STREET

DUNDAS PUBLIC HOUSE

GREENGROCER J K Cran

TOBACCONISTS Coppock's Ltd

DRAPER J H Gaunt

PAINTER Wm Zhanbury Wm

NEWSAGENT Binton Percy

HAVELOCK STREET

PORK BUTCHER F W Farnsworth

WINE & SPIRIT MERCHANT Leslie E Atkin

GROCER J A Hoult

OUTFITTERS S S Plunkett



HOUSE FURNISHERS Coupe M H Ltd

ALFRED STREET SOUTH



PHOTOGRAPHERS St Ann's Studios

CONGREGATIONAL CHAPEL & SCHOOLS

WHOLESALE TOBACCONISTS H H Daws & Sons

FORD STREET ST MARY

WINE & SPIRIT MERCHANT Miss Mary Shaw

FRUITER C C Kay

CYCLE DEALER Frank Holmes

SWANWICK STREET

Tour guide has moved up the street and is now at the intersection of Pym and Peas Hill Road.



Peas Hill Road to the left and Pym Street on the right. Further up on the left is a small TSB bank then the start of Robin Hood Chase which leads all the way to Woodborough Road



The pub is The St Ann's Well Inn. A most appropriate pub for us all to gather in and have a natter and share some memories of this part of the road.

If we cross over the road and walk on past Burtons we have:

122 **Burtons the Furnishers**

124 British Traders (**Grocers**) Ltd

126 Messom Arther **TAILOR**

134 Barnes & Crawford **HOUSE PAINTERS**

136 Wakefield Ernest V **CONFECTIONER**

138 Addison Wm. **HAY & STRAW DEALER**

140 Chase Tavern **PUBLIC HOUSE**

or if we continue up from St Ann's Well Inn we will pass:

PEASHILL ROAD.



175 Treadgold Mrs Violet Ethel **BEER RETAILER**

177 Pilkington Ahert **PORK BUTCHER**

179 -181 Patrick & Green **DRAPERS**

183 Kingson C Ltd **BUTCHERS**

185 Barkers **BAKERY**

187 - 189 Stoppard Jn **PAWNBROKER**

191 Hallworth Harold **NEWSAGENT**

193 - 197 Nottingham **Trustee Savings Bank** TSB

199 Sales H **BUTCHER**

201 Towle Henry Ltd **BAKERS**

203 Livesey Mrs Hannah **DRAPERS**

205 Smith Harold

207 Handley Mrs Alice

209 Pottinger Mrs Lydia

215 Cooper P R & Co Ltd **CHILDREN'S DRESSES MANUFACTURERS**

Robin Hood Billiards Saloon

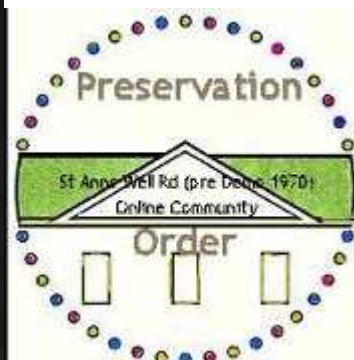
(NOTE: these business were relevant to the early 1950's)

Time to head up towards **The Chase (Robin Hood Chase)**...

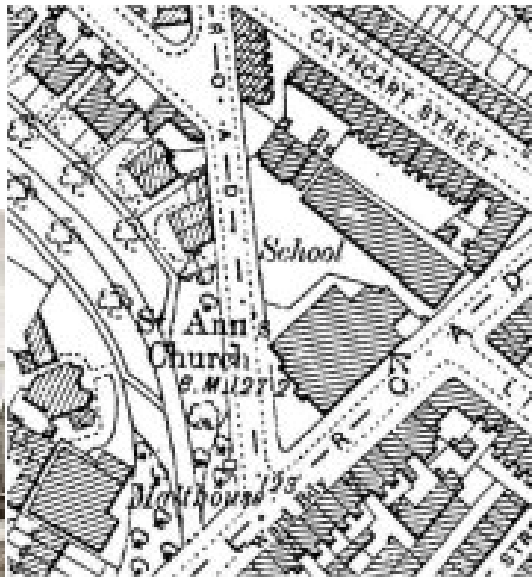
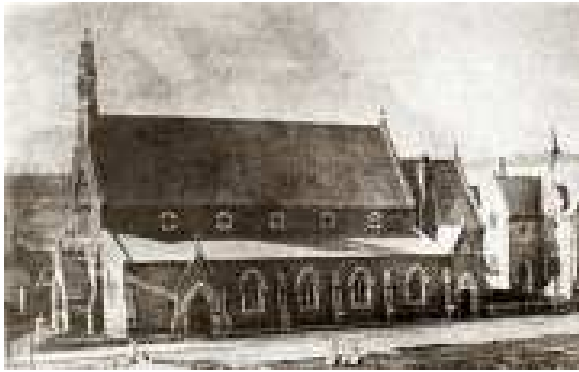
(be sure to check out the photo albums for views of the Chase through the decades)



Here we can also stand and admire The St Ann's Church



The church once had a substantial school alongside (see map)



The most extraordinary thing has happened on this tour:



A note on the flower:

(The common name *Nottingham catchfly* commemorates the former occurrence of *S. nutans* on the walls of Nottingham Castle, and the species was chosen as Nottinghamshire's county flower. Despite this association, Nottingham catchflies no longer occur in either the city of Nottingham or the wider county of Nottinghamshire.)

..standing in the grounds of the St Ann's churchyard has found a rare flower (the Nottingham catch-fly).....Mavis hands the flower to Tony....."I would like to plant this very special and unique Nottingham wild flower here in our very own Garden of Remembrance within the grounds of St. Ann's Church, the very heart of St. Ann's, as a lasting and growing tribute and testimony to the many brave young men of St. Ann's who served in World War One during 1914/18 and to the very special few who gave their ultimate sacrifice for our safe future and happiness"

Never to be forgotten.



Tony: - "Mavis has produced a fantastic document, street by street along with the names of some of the many young men of St. Ann's who served and fought in the Great War. This document could provide you with an opportunity to begin research of your own. It is an aid for individual research with www.ancestry.co.uk to further investigate any of your own relations appearing on this list from the era of the Great War via the Ancestry web site (which is where their service records were initially identified), thanks Mavis."

Mavis: "Thanks Tony. The Excel document has several pages, one of which has good links for research of this kind, including the [ancestry.co.uk](http://www.ancestry.co.uk) one."

We have paused for some time here at St Ann's Church...the garden is established and many of us are searching our photo albums and exploring our family trees for ancestors who served in the armed forces.

A search has been made to find the memorial plaque that once was in the chancel of St Ann's. Evidence has come to light that it was moved to the HQ of the Boys Brigade on Ransom Rd just prior to these events of 1970.....

Whilst this research continues...we turn on the walk to look across the street.... "The Post office must be around here....."

SCROLL DOWN (past the street directory) to arrive at our next destination....

THE POST OFFICE

The Kelly's Directory we have shows we have passed (on the other side of the road from the church:

(according to our Kelly's Directory)

BEACON STREET

146 Carman Wm FRIED FISH DEALER

148 Holden Fred MILLINER

150 Gillespy Patrick W BEER RETAILER

152 Maypole Dairy Co Ltd GROCERS

154 Wood Thos. BUTCHER

*154a Smith J Henry Ltd SILK THROWSTERS (GOODS ENTRANCE) **WAINWRIGHT PASSAGE***

158 & 156 Browns the Furnishers HOUSE FURNISHERS

162 & 160 Hopewells Ltd HOUSE FURNISHERS



Tony popped across to check out what was in the sale for his mum. Wonder if they have any of that modern Ercol furniture?



164 Clarke Ronald CHEMIST

166 Home & Colonial Stores Ltd GROCERS

168 Chace Boot & Shoe Stores BOOT DEALERS

170 Dewhurst J H Ltd BUTCHERS

172 Jane LADIES OUTFITTERS

BYCROFT'S YARD

176 & 174 Lancaster Edwd. DECORATORS' MERCHANTS

180 Chettle Cecil Louis DENTIST

182 Simpson Thos. BUTCHER

184A Margaret LADIES HARDRESSER

184 Bailey D & Son REFRIGERATION ENGINEERS

STANDING HERE WE CAN SEE ST ANNS CHURCH ACROSS THE ROAD...

a photo taken further up the street shows the church in the distance on the right...and the Co op on the left



LIVINGSTONE STREET

186 Lawton Mrs Mary WARDROBE DEALER

190 Limn A W FUNERAL DIRECTOR

192 Taylor T F & Son OPTICIAN

194 Ward W H NEWSAGENT

196 Handley Harry DRAPER

918 Gunn Stephen BUTCHER

202 & 200 Tetley Frank GROCER

204 Newman Thos. Wm

206 Fletcher Albt. HAIRDRESSER

08 Johnson Leonard BOOT & SHOE DEALER

214 Mills Jsph. GREENGROCER

SOUTHAMPTON STREET



looking down Southampton St to St Ann's Well Rd

218 & 216 Marsden J D Ltd GROCERS

220 Meakin Geo BOOT REPAIRER

222 Graingers *FURNITURE DEALERS*

224 Ramsden Leslie L. *CONFECTIONER*

226 Town Sub Post & M.O. Office **POST OFFICE & M.O. Office**

226 Sumner Miss F M *NEWSAGENT & sub post mistress*

228 Whittle Hy. Fredk. *DRAPER*

230 Turton Geo. *BUTCHER*

232 Hallett Stanley *SHOPKEEPER*

234 Fearney Albt. *HARDWARE DEALER*

RIGLEY TERRACE

238 & 236 Whitworth Wltr. **PORK BUTCHER**



THE CO OPERATIVE

240 Nottingham Co-operative Society

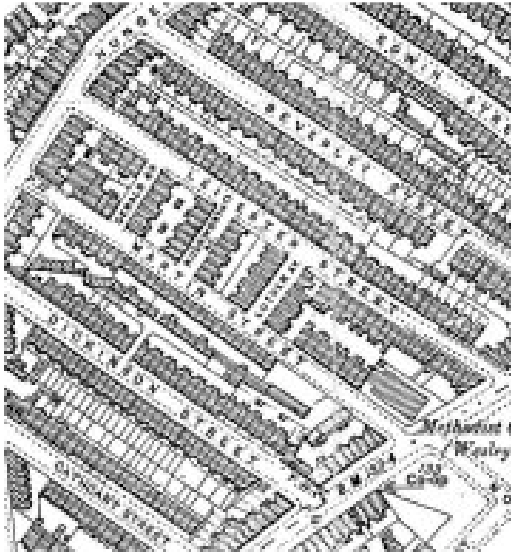
Standing outside The Kings Hall Methodist Church we are looking at the Co-op which is on the corner of Northampton Street

Kings Hall



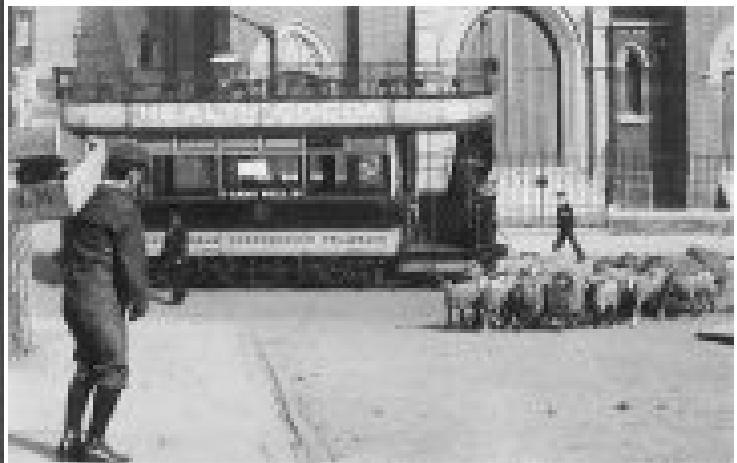
Under the clock
From left to right: Mr. L. J. Thomas (President),
Mrs. J. J. Thomas, Miss J. J. Thomas,
Miss J. J. Thomas, Rev. J. J. Thomas and Rev. J. J. Thomas. M.S. 205.

Kings Hall: re-opening 22 June 1951



NORTHAMPTON STREET

This is an old photo taken at the top of Northampton Street looking to the old Kings Hall



from 1903 is well worth a zoom in!!)

Links about Kings Hall and people connected to this church:

<http://www.thisisnottingham.co.uk/Farewell-Godfather-St-Ann-s/story-12204509-detail/story.html>

<http://www.chezfred.org.uk/gp/FullAlbertHall/16CHAPTER16.htm>

Crossing Northampton Street we arrive at the Public Baths....perhaps time to scrub up before we cross the road to visit Kings Hall and make our way up to the Board School.



246 City of Nottingham Public Baths

248 Cooper K G RADIO ENGINEER

250 Rafter Mrs Betty

252 - 254 King Bert BEER RETAILER

CALCUTTA STREET



Calcutta St circa 1970

260 Meadow Dairy Co Ltd DAIRY

262 Watson Hy. E FISH FRYER

264 Carlton Laundry & Dye Works Ltd

266 Strecker Mrs Eliz PORK BUTCHER



Streckers were renowned for their smallgoods (polony etc) Their son Fred was a well known local speedway rider in the 1930s

Fred Strecker

To learn more of Fred's career go to <http://www.speedway-forum.co.uk/forums/index.php?showtopic=12061> or <http://www.thisisnottingham.co.uk/golden-era-speedway-racing-relived-new-book/story-13986959-detail/story.html>

for info on the speedway track <http://www.defunctspeedway.co.uk/Nottingham.htm>



268 Wand Wm

270 Stackhouse Arth.

272 Cox Arth. WATCH & CLOCK REPAIRER

276 Martin Arnold BUTCHER

(At this point Mavis remarks that Martins was her family's local butcher..."a small joint for the Sunday roast and some 'lights' for the cat and bones for the dog." ...we did not have a dog at the time...the bones were to make a stock for a stew!)

278 Parker Fras. Jas BEER RETAILER



map 1920 Pym to Duncombe open in file section to zoom in) - Showing the Chase and the church.

TOUR GUIDE OPENS UP THE MAP AGAIN...."Looking back to St Ann's Church.....from where we are standing on the corner of Meredith Street... these are the streets and buildings we have passed along the way:

ROBIN HOOD CHASE & CORPORATION ROAD

St Ann's Church and Schools

219 Smith Stanley N CONFECTIONER

221 Beasley Percy FURNITURE DEALER

223 Garden Gate PUBLIC HOUSE

CATHCART STREET

225 Clarke Mrs Blanche BEER RETAILER

227 & 229 Clarke Jsph FISH FRIER

233 Sanders & Sons Ltd BOOT & SHOE DEALERS

235 Truswell Arth DAIRYMAN

237 Durose Ernest

239 Caves Arth

241 Morris Mrs Muriel BEER RETAILER

DICKINSON STREET

245 Scots Grey Inn PUBLIC HOUSE

247 Summers Wltr CONFECTIONER

249 Stainsby Bernard NEWSAGENT

251 Lady Bay Cleaners Ltd DYERS & CLEANERS

253 Reeve Geo Son HAIRDRESSERS

255 Bartle Mrs G BABYWEAR

257 Helliwell Alex SHOPKEEPER

259 Weathrtland Jas. GREENGROCER

MARTIN STREET

MISSION ALBERT HALL

KINGS HALL CHURCH

269 Boots the Chemist CHEMIST

LEICESTER STREET

- 271 Stapleford Jas GREENGROCER
- 273 Northage J S FISHMONGER
- 283 Nottingham Imperial Laundry Ltd
- 285 Scrimshaw Ltd PORK BUTCHERS

BEVERLEY STREET

- 289 Burrell Geo CYCLE DEALER
- 291 Howard Fred BUTCHER

An Alley way appears here.....and Tony has some comments to add:



"Does anybody remember the famous McCarthy twin brothers, Decorators & Wall paper hangers, they worked for their Mam & Dad who had a work shop up an alley between Beverley St and Edwin St. next to Howards the butchers. They were both cross eyed and wore thick specs...how on earth they got to match the patterns on the wallpaper; god only knows...they were always running..... and pushing an old pram with all their paint, wallpaper and brushes on the top with their ladders sticking out. They also had a famous brother, Dennis who went on to be a well known. broadcaster on Radio Nottingham."

- 293 Wilson H MARINE STORE DEALER
- 295 Ware Mrs Emily Maria HARD CONFECTIONER
- 297 Hodkin Harry NEWSAGENTS
- 299 Errick Harry FRUITERER

Between Edwin Street and Duncombe Street was the County Primary Schools (junior, mixed and infants) better known to us as



ST ANNS BOARD SCHOOL

- The map is from one of 1885 and shows the layout of the school

ST ANN'S BOARD SCHOOL



Edwin Street



Duncombe Street



BOARD SCHOOL – The hall - Christmas time

The school hall used for many purposes – including Boys's Brigade drill practice

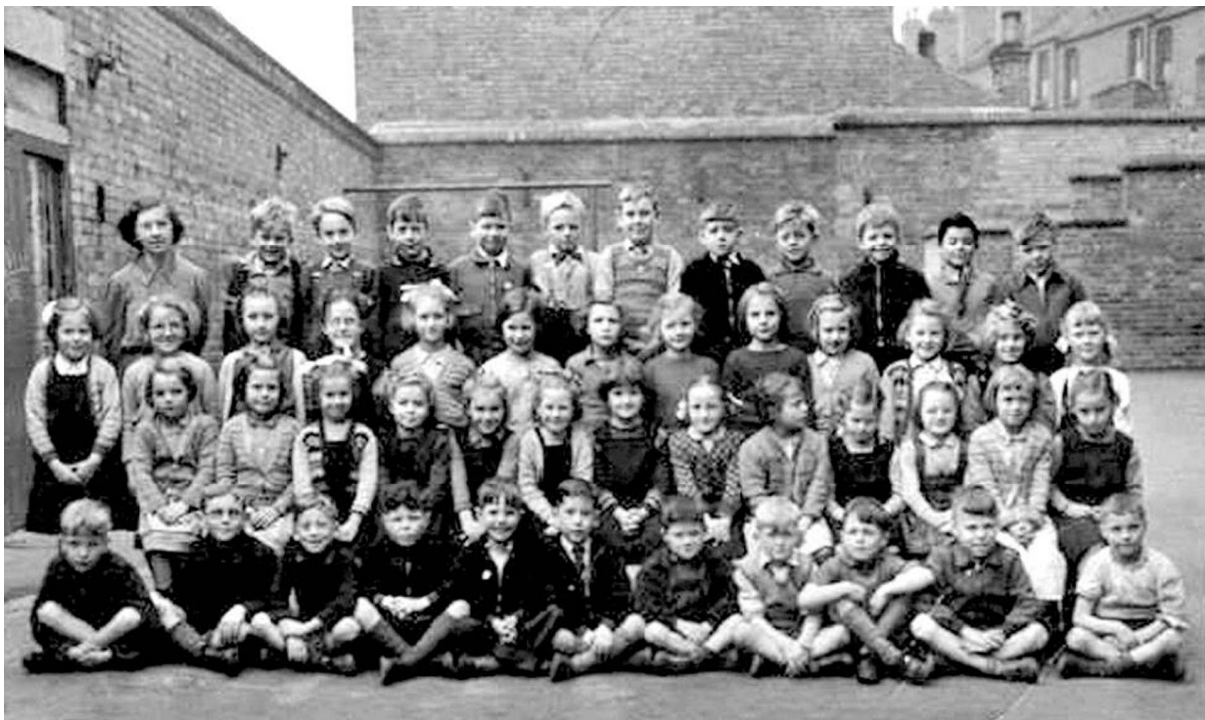


and school photos





School photos were taken also in the junior school playground and the boy's playground.





Digital Image © North East Midlands Photographic Record
All Other Rights Reserved

photo taken from Bombay St looking up Edwin Street

TOUR GUIDE COMMENTS:

"This photo stirred many memories when first put up on our site...you can see them at



http://www.facebook.com/groups/165773113522985/permalink/166797590087204/?comment_id=198212760279020&offset=0&total_comments=42"

Shortcut to uploaded pdf files to our file section on this site.....showing 1930 images of children in Board School (from Bygone mag) <http://www.facebook.com/groups/165773113522985/272580229508939/>

and

<http://www.facebook.com/groups/165773113522985/272580536175575/>

PHOTO ALBUM OF BOARD SCHOOL

"We have also created a large photo album related to the school...see it here:"

<http://www.facebook.com/media/set/?set=oa.247402232026739&type=1>

TONY MILLER adds the comment: ...*"we moved on to St .Ann's Well Rd to 284 opposite the Board school, my Dad took the brave step of opening his first shop, next door but one to Exton's sweet shop, Hughes babywear shop next door, and another second/hand furniture shop Nixons, Dad's shop was a general dealer's.... house clearing etc or more commonly described as a "Junk Shop" it was a start..and he was on his way, packed in full time work as a lorry driver for Billy Bate's down at the W/Sale Market, switched to sewing machines old & new..started trading as City Sewing Machine Supplies, later had three more shops and as a family we all lived behind and above the shop."*

TOUR GUIDE adds *"Yes Tony, we can verify that....in the records the Miller name pops up several times in this area. Looking back to Bombay St we can see a Mr Alec Miller at No 284 - a general draper! And at the bottom of Twells St also is a Miller."*

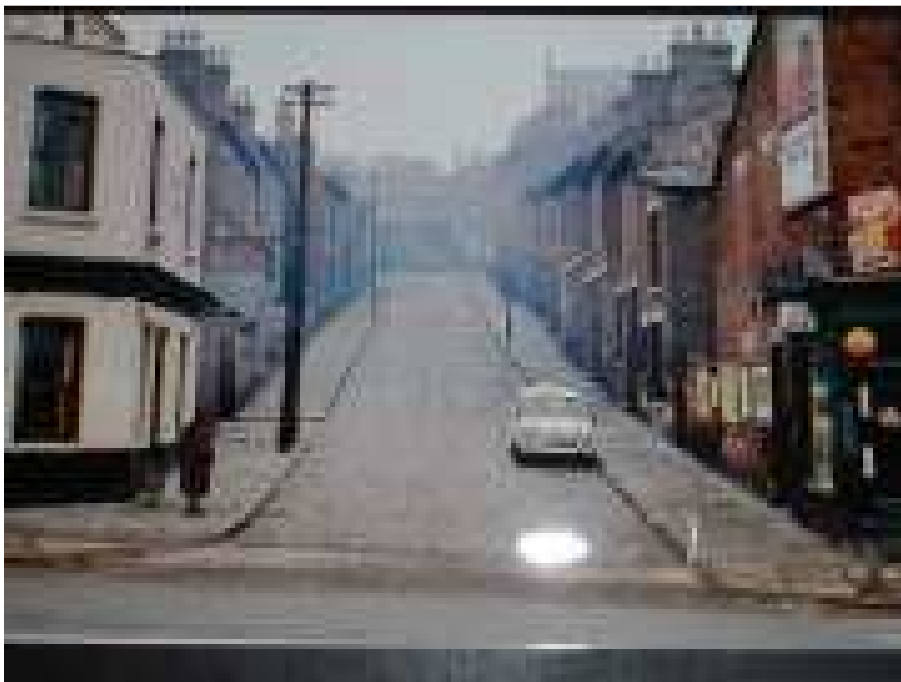
BOMBAY STREET

284 Miller Alec GENERAL DEALER

286 Hughes Mrs Harriett E DRAPER

288 Exon Miss E L R SHOPKEEPER

MEREDITH STREET

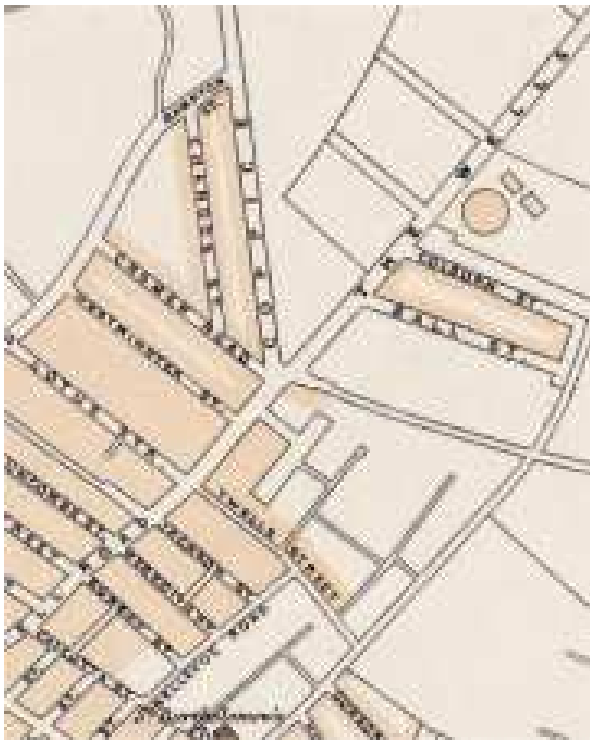


290 General Havelock PUBLIC HOUSE

294 & 292 Woollatt Miss Nerissa DRAPER

296 Lee A E SEWING MACHINE DEALER

298 Lago Mrs Annie M SHOPKEEPER



Staying on the same side of the road as the Board School we pass:

DUNCOMBE STREET

- 301 Thorpe Hy GREENGROCER
- 303 Holliday Chas, Wm HAIRDRESSER
- 305 Lover Albt SHOPKEEPER
- 307 Peace Arth FRUITERER & GREENGROCER
- 309 & 311 Whiting John & Sons Ltd PAWNBROKERS

NORLAND ROAD

- 327 Cooke Wm BEER RETAILER
- 333 Doye Mrs Sarah A CONFECTIONER
- 335 Mason Bros BUTCHERS
- 337 Rawson Albt FRIED FISH DEALER
- 341 Ayers Wm NEWSAGENT

343 Trotts Wm C R HARDWARE DEALER



LOTUS STREET

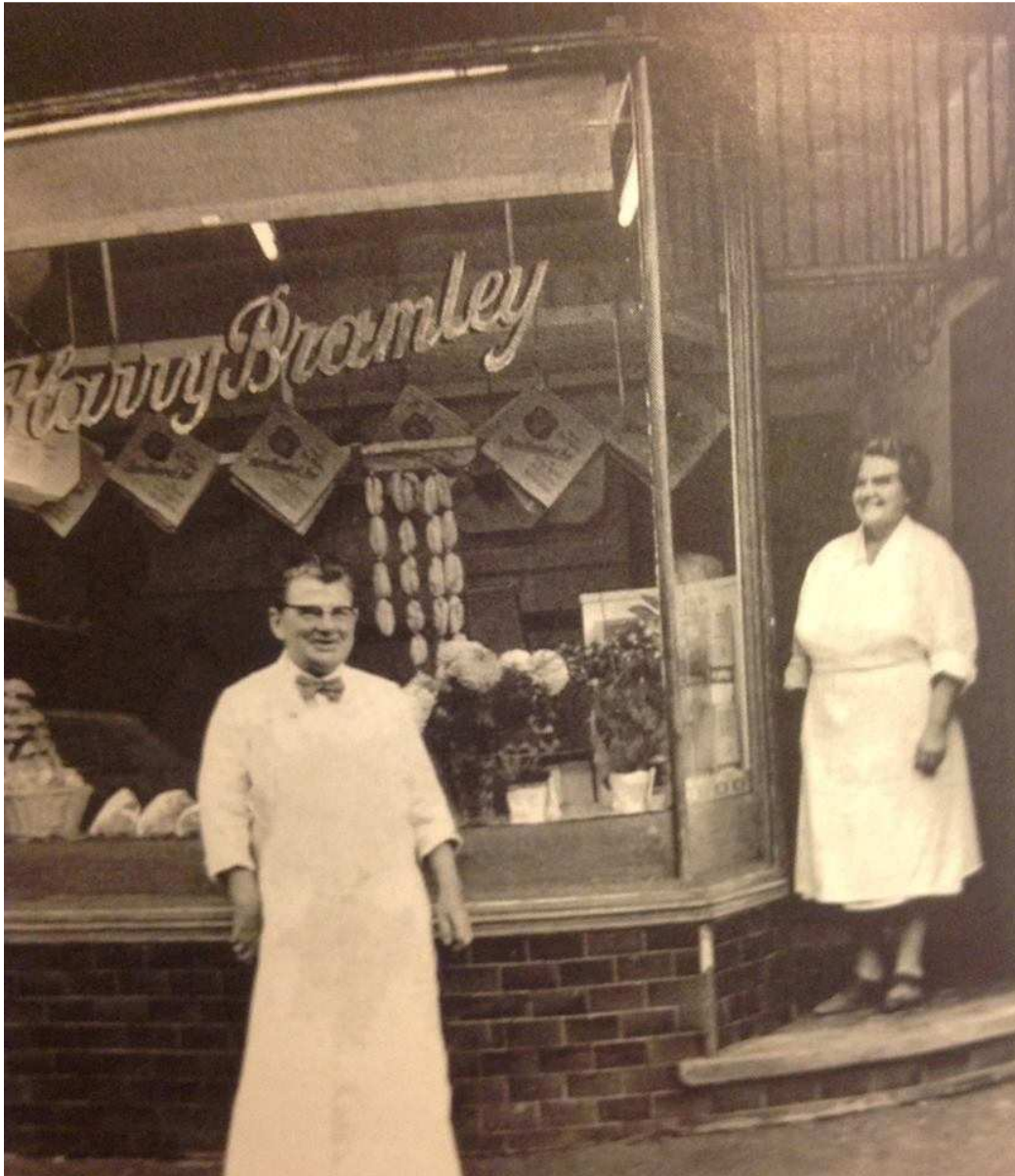
345 & 347 QUEEN'S ARMS PUBLIC HOUSE

351 Sudworth Mrs Alice M DRAPER

353 Turton Fredk J CONFECTIONER

355 Sanderson Mrs Eliz TRIPE DRESSER

357 Beighton Horace BOOT REPAIRER



363 TACEYS Fish & Chip Shop

Tony Miller: Next door to Sir Harry's shop was Tacey's Fish & Chip shop, we used to get our 3p mix from here on our way back home from BB Mr.. was a very nice chap ...always full of fun...he used to have a trick when gave you the change, he did it to all the kid's...he used to conceal the change in one hand and with the other he used to click the coin on the hot stainless steel counter top...then he used to lift the hand where you the change was and then he would give you a wink, and give you the change from under the other hand....it worked every time, I never forgot it and still play the same trick on my grandchildren. His wife Mrs.Tacey was a lovely lady" Been to BB lad's,? I bet you had a good time" she used to say... a real Mum...I think.....but not really sure didn't she later get killed in a tragic car accident....they had a son Howard Tacey, I think he was an only one....I have seen him over the years and I think that he has now retired and moved out to live in France. Tacey's Fish & Chip's lovely M'Duck.....

Mavis Baker: Mrs Tacey died by falling out of their car when the door fell open as they went round a roundabout on their way to a holiday in Mablethorpe. My family was in Mablethorpe at the time - Harry Bramley's son was there too - he told us about the accident.

Tony Miller How terrible...looking back she must have been quite young when she was killed 50 ish..what a shame.

365 Nottingham Co-operative Society BUTCHERS

367 Easter J W HAIRDRESSER

David Daykin remembers:

"Easters barbers, He is the only barber I ever saw who used a cut throat razor to shave someone. The honing of the razor on a strop was quite a skill. The three stooges in the photo are left to right, Paul Lakin of Westminster St, John Stafford of Shelton St, and me of Lotus St. We must have been waiting for the pearly gates of the Queens Arms to open !!!!

IF WE HAD CROSSED THE ROAD AT THE BOARD SCHOOL WE WOULD HAVE BEEN IN THE VICINITY OF:

JACKSON STREET

306 Sharp Reuben BUTCHER

308 Victoria Laundry & Dyeworks (Nottingham) Ltd LAUNDRY & DYEWORKS 310 Humphreys Miss Constance SHOPKEEPER

312 Cousin Miss Bessie LADIES HAIRDRESSER

314 James Royston GROCER



316 Bullock Miss Bessie LADIES HAIRDRESSER (??????)

TED BULLOCK HAIRDRESSER

Looking up St. Ann's Well Rd towards Lotus St. On the left hand side is Rawson's Fish & Chip shop with the white car outside, then the paper shop and Trotts on the corner and Bramley's further up on the left. On the other side of the road is . Wakelins ladies hairdressers where the pram is. Here also is

Ted Bullocks - you can see the razor blade sign above the shop door. This is where you got your Tony Curtis hair cut. In his window he displayed toys and a whole range of products that could be purchased there.

Tony Miller says that he was a real MEAN barber, he would point to the pictures on the wall and say "Do you want a Tony Curtis, a Bob Mitchum, a Burt Lancaster, an Elvis, or a Perry Como?" He would then try and sell you a comb, or a pair of socks whilst cutting your hair but he would NOT cut your hair if you had been to Charlie Halidays the time before.

David Daykin said: Re Ted Bullock. He was the cheapest barber ,1/6d, next up the road was Bill Easter at the side of Harry Bramley's cost 1/9d., and then Charley Halliday at 2 bob and he had a twin brother and had a photo in the shop of his brother cutting his hair with the comment "who cuts the barbers hair?"Ted had a

large mirror in the shop with photos of film stars all over it. The idea was that you picked one out and Ted would make you look like him??? The only trouble was Ted could only perform one hair style, so that's what you got everytime. We all used to choose Tony Curtis, with his long curl drooping down his forehead. Ted used to tell us how to get this effect. Take a lock of your hair, spit on your fingers and then twist, twist and twist until you got that effect. When you walked out of the shop and up the road you often met somebody approaching and spitting on their fingers and twisting their hair. " been to Teds,yep ,, av you,,yep"" Will tell you more stories about Ted later. A good bloke nevertheless

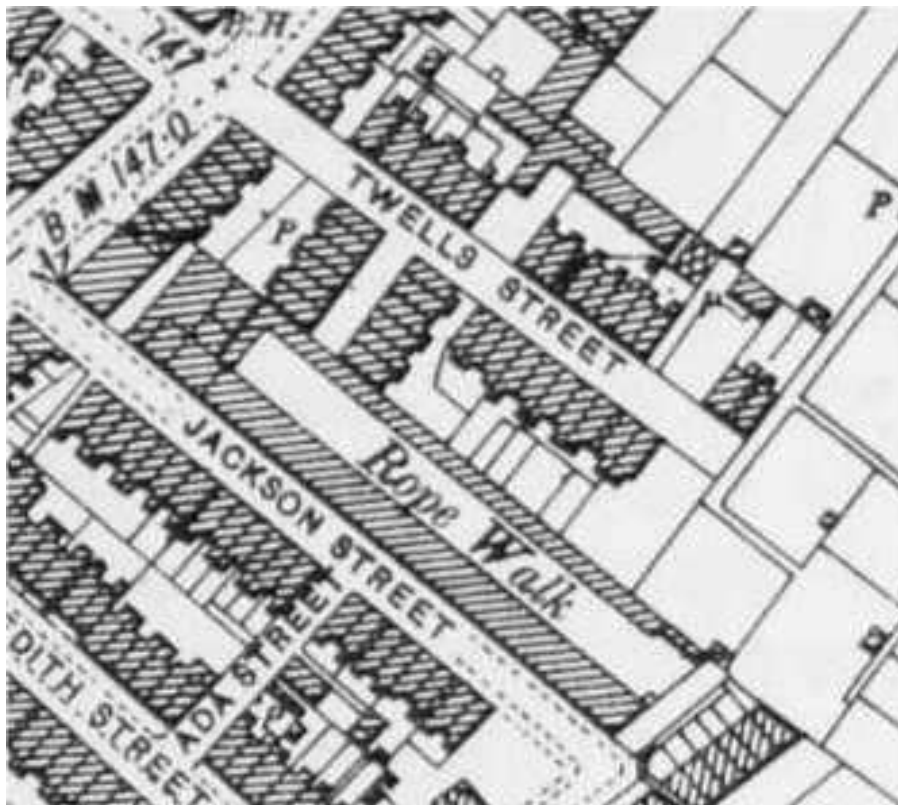
David Daykin: Ted Bullock - Ted would often cut the back of your neck and would comment " do you know you have a rash on your neck? But Ted was the Dr Phil of senty and could fix this problem. He sent you up the road to Oldhams chemist (facing Harry Bramleys)., for 2 penneth of peroxide. When you got back in the shop he splashed it on the back of your neck. I thought i saw Lazarus running out of there one day after the treatment!!Again walking up the road and with your neck bent forward to stop it touching your coat collar you would see someone and the comment " been to Teds „yep"

Tony Miller: Brilliant.....and that's why Ted has achieved our first Senty, "Blue Plaque" award for services to the hairdressing industry and helping to make Tony Curtis as famous as he was....his first model. * * * * *

Tony Dexter said: Barber Bullock Story: Remember classmate Alan Bentley going there one lunch hour for a "Basin Cut". Came back to school dripping all over his forehead with some of Ted's special grease on mixed with hair clippings. Morley teacher Mr Wilkinson quipped to tell him next time to "Put a Spot and not the Pot".

320 Newman Mrs Annie

322 Webster Thos H



TWELLS STREET

324 Miller C SHOPKEEPER

328 Abberley Miss Gladys LADIES HAIRDRESSER - did this used to be Wakelins?

330 Kirkham Mrs Winifred M DRESSMAKER

332 Quality House BOOT & SHOE DEALERS

336- 334 Webster, Jack FISHMONGER (& FRUITER & GREENGROCER)

338 Grindle Leonard

340 James Rt

....YARD

342 Oldham Wilfred K CHEMIST

348 McQuiggan Stephen

350 Peck Harold W

352 Hayes Wm.

354 Wallsdale Mrs Annie (Worsdale?)

356 Baker Geo. "Mavis Baker lived here"

358 Stoneystreet Geo A & Lucy

360 Sharp Mrs Kate TABBOCONIST and newsagent

"cobble stones looking much like this were on many of the side streets off St Ann's Well Road"



BILBERRY STREET

362 Danby Wltr. CONFECTIONER

364 Smith Arth. NEWSAGENT

366 Smith Arth. HARDWARE DEALER

368 Smith Geo A DRAPER

374 Lightowler L FRIED FISH DEALER

376 Allen Mrs Emma SHOPKEEPER



The picture below is looking up the road from Bilberry St...The shops at 362 to 376 are on the right in this image as they would have been in the early 1900s. Wells Rd goes off into the distance straight ahead, and Coppice Rd/Ransom Rd goes off to the right...



371 Henson Geo COAL MERCHANT AND HARD CONFECTIONER



at the bottom of Westminster St was a pillar box for mailing letters.

WESTMINSTER STREET



373 Swift Thos & Sons GREENGROCERS

377 Searle Geo Wm

379 Teather Mrs Florence CONFECTIONER and homemade ICE CREAM. Had a son Michael and daughter Linda.

Tony Miller: Teathers Ice Cream Yum...Yum..Mick Teather their son, was in the Boy's Brigade he was a little bit older than us and eventually became an officer in the company. He was a great chap and a well known larger than life character...because he was quite a big lad, with a very big heart....some of the kid's used to be cruel and call him names

"Fatty Teather" was the favourite, he just used to laugh about it and take it all in his stride and joke about his size....he used to join in all the sports with us and was in particular a very good badminton player...he also used to play the big drum on our BB band parades once a month...he loved the BB and was a very good friend, always happy and very good company, sadly he died just a few years ago of cancer at quite a young age...if anybody deserved one of our "Unsung Hero Award" it was Mick Teather... God Bless him.

381 Thackery Saml

383 Wrench Leonard GROCER

387 Westminster Abbey PUBLIC HOUSE



Photo taken from bottom of Donkey Hill (St Bartholomew) - Westminster Hotel to the right, Westminster St beyond. On the left is Bilberry St.



This is the end of St Ann's Well Rd where the buses terminated, turned around and began the journey back down to the city and beyond.



turning 45 deg to the right of the other photo we would have had this view of the police station at the intersection of Ransom Rd and Wells Rd

We are now at the intersection where St Ann's Well Road continues on into Wells Road (to where we would find the Morley School, the railway bridge, the site of the actual St Ann's Well and the allotments) ..Wells Rd connects with Woodborough Rd and Mapperleu Top



ST BARTHOLOMEWS RD.....also at the intersection goes off the hill on the right



Ransom Road /Cromer Road – goes off to the left, leading to the Coppice Rec and Woodborough Road. This road was once a toll road.



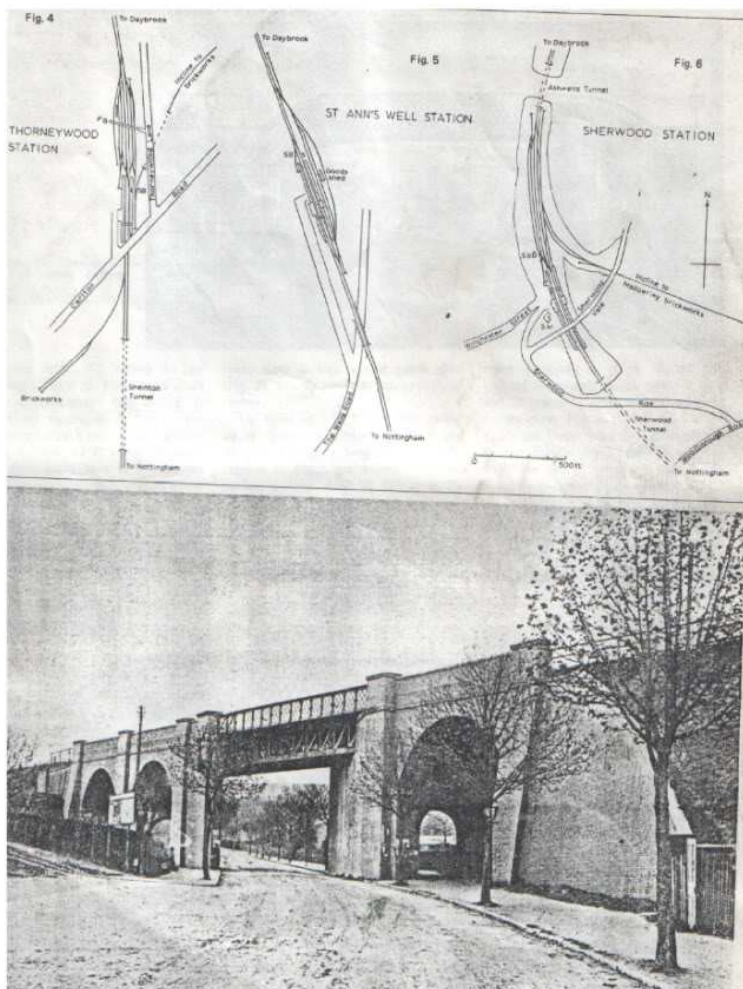
Looking back



Ransom Rd/Coppice Rd (allotments on the left) looking back to St Ann's Well Rd (circa early 1900s)



The Morley School 1933



The Railway and bridge – beyond Morley School



Wells Road circa 1925



Taylor's footpath linking Wells Road with Porchester Rd

FILE LINKS within our site

St Anns a Brief History: <http://www.facebook.com/groups/165773113522985/doc/262809153819380/>

Central Market photos <http://www.facebook.com/media/set/?set=oa.200737526693210&type=1>

The Empress: <http://www.facebook.com/groups/165773113522985/doc/250370305063265/>

pdf files to our file section on this site showing 1930 images of children in Board School (from Bygone mag)

<http://www.facebook.com/groups/165773113522985/272580229508939/>

<http://www.facebook.com/groups/165773113522985/272580536175575/>

LINKS TO THE PHOTO ALBUMS:

1. [The Streets Where we Lived - and places we remember](https://www.facebook.com/media/set/?set=oa.468330353267258&type=1)

<https://www.facebook.com/media/set/?set=oa.468330353267258&type=1>

2. [OUR BACKYARDS and FRONT DOOR STEPS](https://www.facebook.com/media/set/?set=oa.476629359104024&type=1)

<https://www.facebook.com/media/set/?set=oa.476629359104024&type=1>

3. [MAPS](https://www.facebook.com/media/set/?set=oa.458898917543735&type=1)

<https://www.facebook.com/media/set/?set=oa.458898917543735&type=1>

4. [SCHOOL PHOTOS](https://www.facebook.com/media/set/?set=oa.481560711944222&type=1)

<https://www.facebook.com/media/set/?set=oa.481560711944222&type=1>

5. [THE LADS](https://www.facebook.com/media/set/?set=oa.470825143017779&type=1)

<https://www.facebook.com/media/set/?set=oa.470825143017779&type=1>

6. [THE INDIVIDUALS - THE FAMILIES - PEOPLE WE KNEW](https://www.facebook.com/media/set/?set=oa.481697775263849&type=1)

<https://www.facebook.com/media/set/?set=oa.481697775263849&type=1>

7. [WEDDING PHOTOS](https://www.facebook.com/media/set/?set=oa.481706945262932&type=1)

<https://www.facebook.com/media/set/?set=oa.481706945262932&type=1>

8. [TROLLEY BUSES](https://www.facebook.com/media/set/?set=oa.479721052128188&type=1)

<https://www.facebook.com/media/set/?set=oa.479721052128188&type=1>